

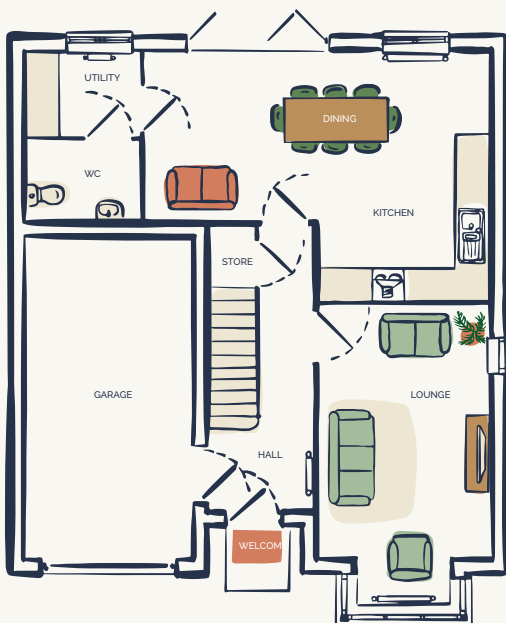
THE NOTTINGHAM

4 BEDROOM HOME



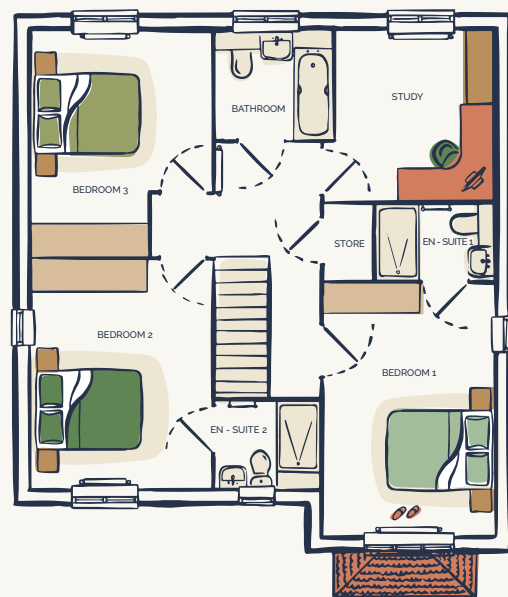
The ground floor of this contemporary family home includes a spacious living area, open-plan kitchen/diner, utility room, WC and an integral garage which is accessible from the hall.

The first floor comprises a home office, a modern bathroom and three double bedrooms, two with ensuite.



GROUND FLOOR

- Kitchen / Dining
6.4 x 4.7m
- Utility
2.1 x 1.5m
- WC
1.6 x 1.5m
- Lounge
4.7 x 3.2m
- Garage
6 x 3m
- Store
0.8 x 1m



FIRST FLOOR

- Primary Bedroom
3.2 x 4.7m
- En - Suite 1
1.4 x 2.2m
- Bathroom
2.2 x 2m
- Store
1.4 x 0.9m
- Bedroom 2
4.3 x 3.4m
- En - Suite 2
1.6 x 2m
- Bedroom 3
3.4 x 4.2m
- Study
2.9 x 3.2m

This information is for guidance only. Illustrations show a typical floor plan however there may be variances depending on the development and specific home. A detailed drawing pack is provided at the beginning of the reservation process.