

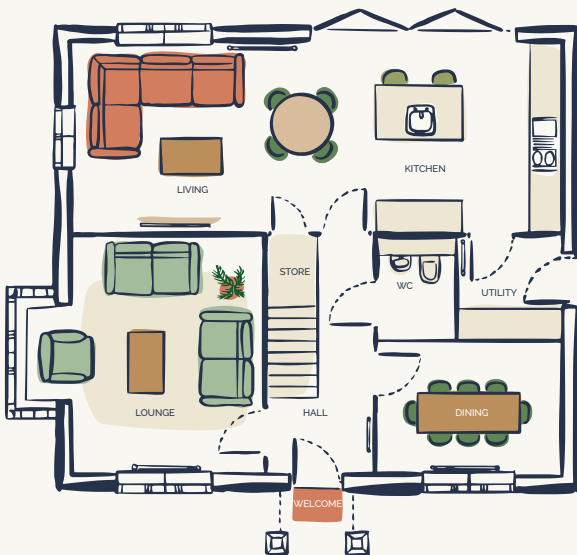
# THE MARLBOROUGH

4 BEDROOM HOME



The Marlborough's welcoming entrance hall leads onto a large lounge, good sized dining room, a handy WC and an exquisite kitchen/living area with access to the rear of the property.

The first floor's primary bedroom includes a dressing room and an en-suite with shower, while three more bedrooms, one with ensuite, a family bathroom and two storage areas round out the property.



## GROUND FLOOR

Kitchen / Living  
10.2 x 3.6m

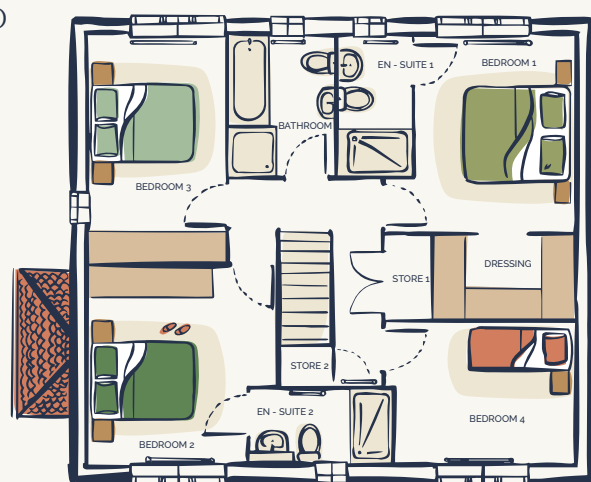
Utility  
2 x 2m

WC  
1.6 x 1.5m

Lounge  
4.5 x 3.6m

Dining  
3.5 x 2.5m

Store  
1.6 x 0.9m



## FIRST FLOOR

Primary Bedroom  
3.8 x 3.1m  
Dressing Room  
2.7 x 1.6m  
En - Suite 1  
2.8 x 1.5m

Bathroom  
2.7 x 2.3m

Bedroom 2  
3.9 x 3.7m  
En - Suite 2  
2.7 x 1.4m

Bedroom 3  
4.5 x 2.7m

Bedroom 4  
3.5 x 2.7m

Store 1  
1.6 x 0.9m  
Store 2

This information is for guidance only. Illustrations show a typical floor plan however there may be variances depending on the development and specific home. A detailed drawing pack is provided at the beginning of the reservation process.