

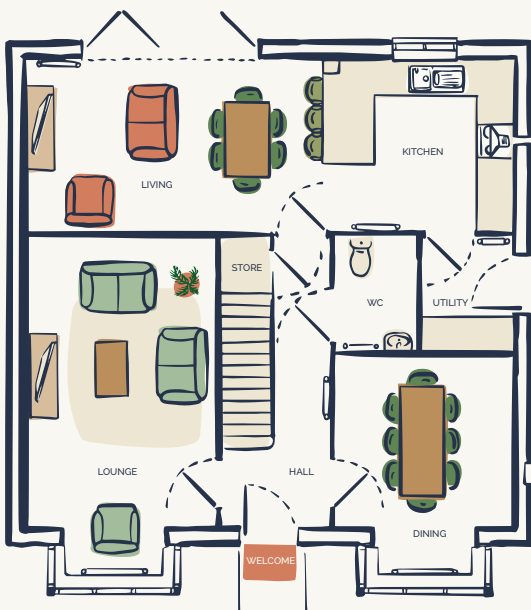
THE LANCASTER

4 BEDROOM HOME



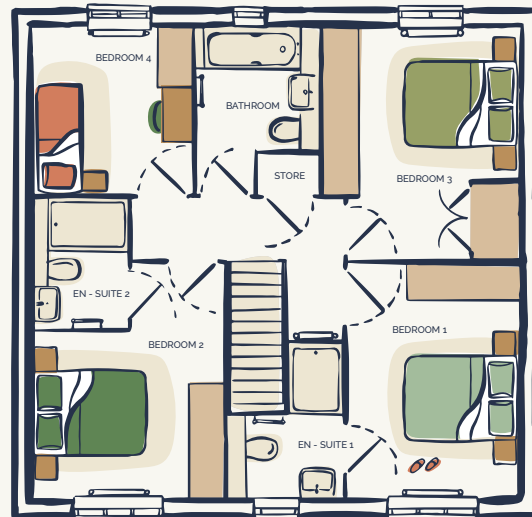
With a ground floor that includes a large kitchen/living area, a separate lounge and a dining room, the cleverly designed Lancaster is made for socialising. A utility room and convenient WC complete the ground floor.

To the first floor are four bedrooms, two with ensuite, a stylish family bathroom and additional storage space.



GROUND FLOOR

- Kitchen / Living 8.7 x 3.1m
- Utility 1.6 x 2m
- WC 1.5 x 2m
- Lounge 3.4 x 5.1m
- Dining 3.1 x 3m
- Store 0.9 x 0.9m



FIRST FLOOR

- Primary Bedroom 4.1 x 3m
- En - Suite 1 2 x 2.6m
- Bathroom 2.2 x 2.2m
- Store 0.7 x 0.9m
- Bedroom 2 2.9 x 3.3m
- En - Suite 2 1.7 x 2.3m
- Bedroom 3 2.7 x 3.5m
- Bedroom 4 2.8 x 2.9m

This information is for guidance only. Illustrations show a typical floor plan however there may be variances depending on the development and specific home. A detailed drawing pack is provided at the beginning of the reservation process.