

THE GLOUCESTER

3 BEDROOM HOME



The Gloucester's ground floor boasts a large lounge, handy WC and a utility room, as well as a spacious, open plan kitchen/dining area.

To the first floor are two double bedrooms, one with ensuite, a family bathroom and a comfortable and practical home office.



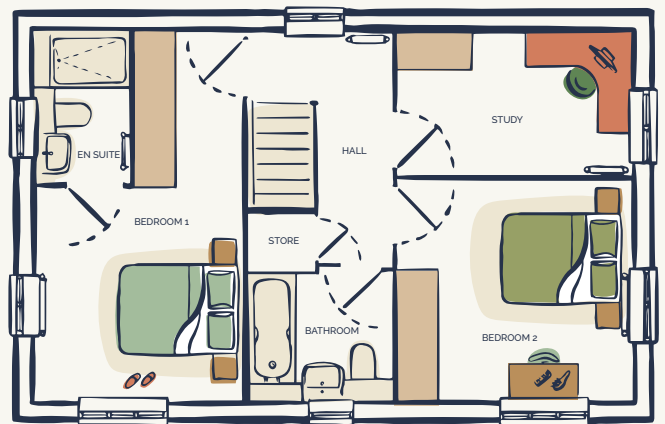
GROUND FLOOR

Lounge
3.1 x 5.5m

Kitchen / Dining
3.1 x 5.5m

Utility
1.7 x 2.3m

WC
1.9 x 1.4m



FIRST FLOOR

Primary
Bedroom
3.2 x 3.1m

En - Suite
2.2 x 1.4m

Bathroom
2 x 2.2m

Bedroom 2
3.5 x 3.3m

Study
3.5 x 2.1 m

Store
0.8 x 0.8m

This information is for guidance only. Illustrations show a typical floor plan however there may be variances depending on the development and specific home. A detailed drawing pack is provided at the beginning of the reservation process.