

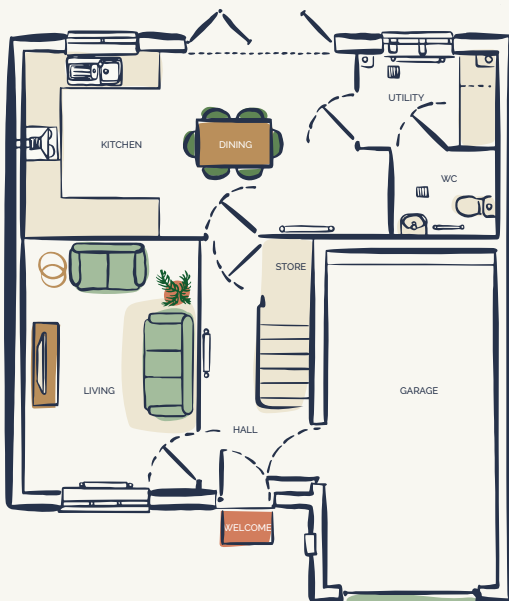
THE CORNWALL

3 BEDROOM HOME



Featuring an integral garage, a good sized living room, a stylish kitchen/diner, a utility room and a WC, the Cornwall has been designed with convenience in mind.

The first floor is home to three double bedrooms, including a primary bedroom with dressing room and ensuite, a modern family bathroom, a study and additional storage space.



GROUND FLOOR

Kitchen / Dining
5.9 x 3.2m

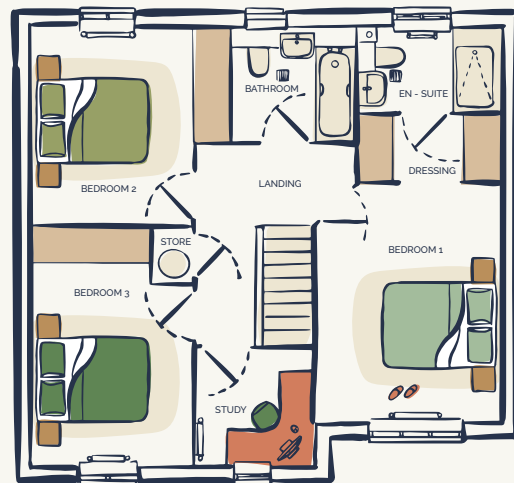
Utility
2.4 x 1.7m

WC
1.8 x 1.4m

Lounge
4.5 x 3.1m

Garage
3 x 6m

Store
1.9 x 0.8m



FIRST FLOOR

Primary
Bedroom
4.3 x 3m

Dressing Room
2.5 x 1.2m

En - Suite
2.5 x 1.5m

Bathroom
2.2 x 1.6m

Bedroom 2
3.5 x 3.5m

Bedroom 3
4.3 x 2.9m

Study
2.1 x 2.1m

Store
0.8 x 0.6m

This information is for guidance only. Illustrations show a typical floor plan however there may be variances depending on the development and specific home. A detailed drawing pack is provided at the beginning of the reservation process.